



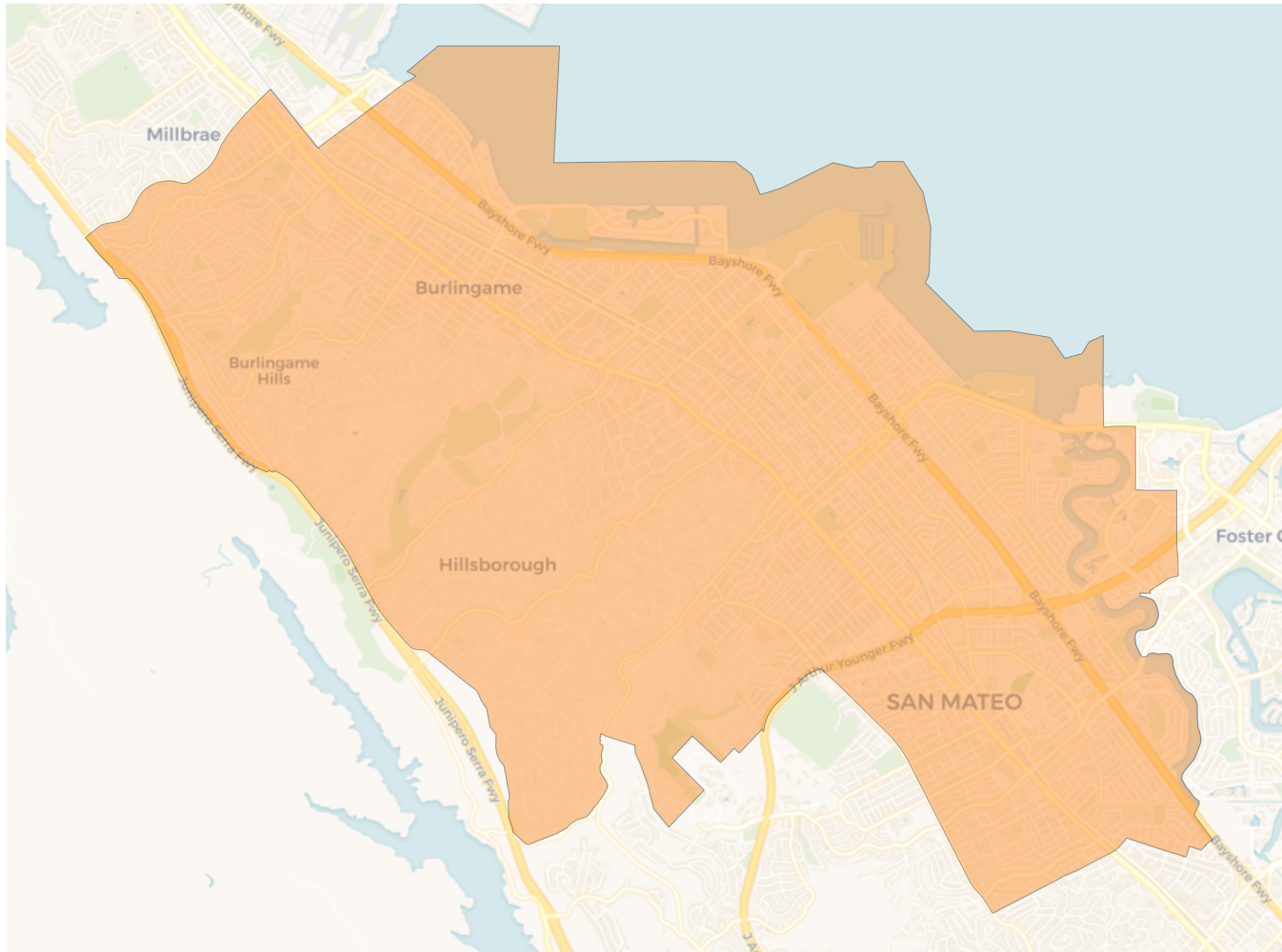
**2020 Census**

	A	B	C	D	E
Population	147,260	154,748	157,706	149,978	155,725
Deviation	-5,823	1,665	4,623	-3,105	2,642
Deviation %	-3.8%	1.1%	3.0%	-2.0%	1.7%
Other	71,670	44,867	58,948	77,032	78,351
Other %	48.7%	29.0%	37.4%	51.4%	50.3%
Latino	31,650	44,343	35,559	25,556	54,670
Latino %	21.5%	28.7%	22.5%	17.0%	35.1%
Asian	41,902	62,779	60,380	45,406	17,358
Asian %	28.5%	40.6%	38.3%	30.3%	11.1%
Black	2,038	2,759	2,819	1,984	5,346
Black %	1.4%	1.8%	1.8%	1.3%	3.4%

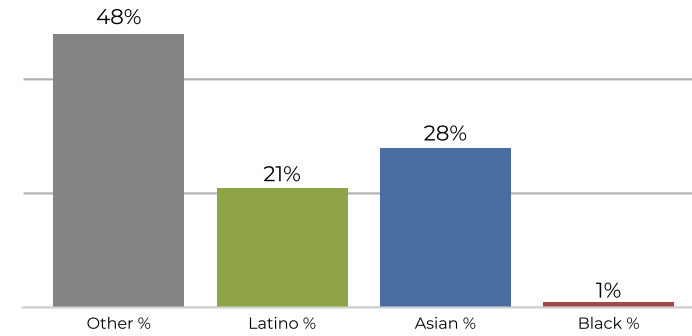
**Citizen Voting Age Population (CVAP)**

	A	B	C	D	E
Total CVAP	91,612	108,010	114,148	94,108	94,458
Other CVAP	52,836	36,888	49,747	58,291	60,572
Other CVAP %	57.7%	34.2%	43.6%	61.9%	64.1%
Latino CVAP	13,751	25,528	18,722	11,931	19,746
Latino CVAP %	15.0%	23.6%	16.4%	12.7%	20.9%
Asian CVAP	23,163	43,461	42,336	22,114	9,246
Asian CVAP %	25.3%	40.2%	37.1%	23.5%	9.8%
Black CVAP	1,862	2,133	3,343	1,772	4,894
Black CVAP %	2.0%	2.0%	2.9%	1.9%	5.2%

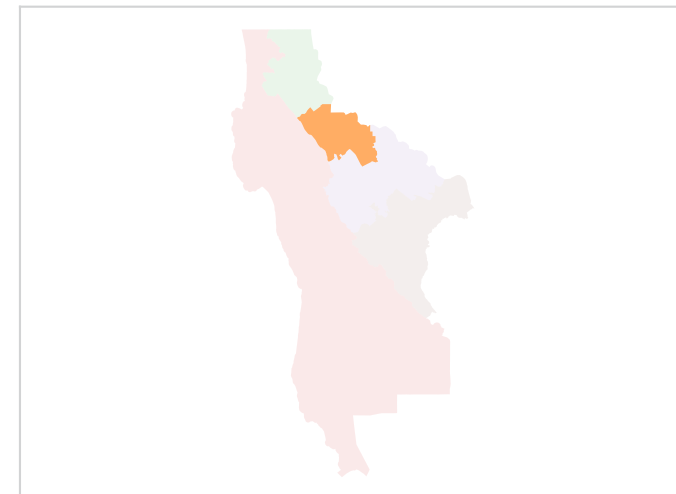
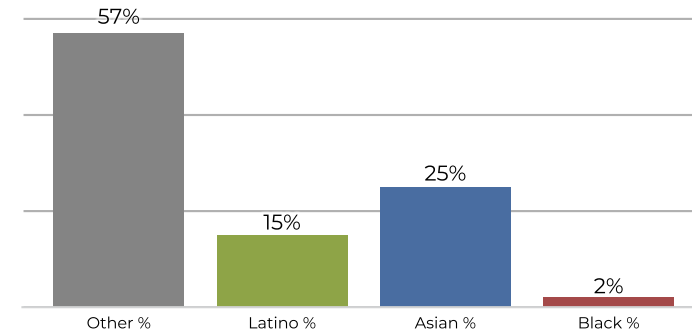
### District A



### 2020 Census

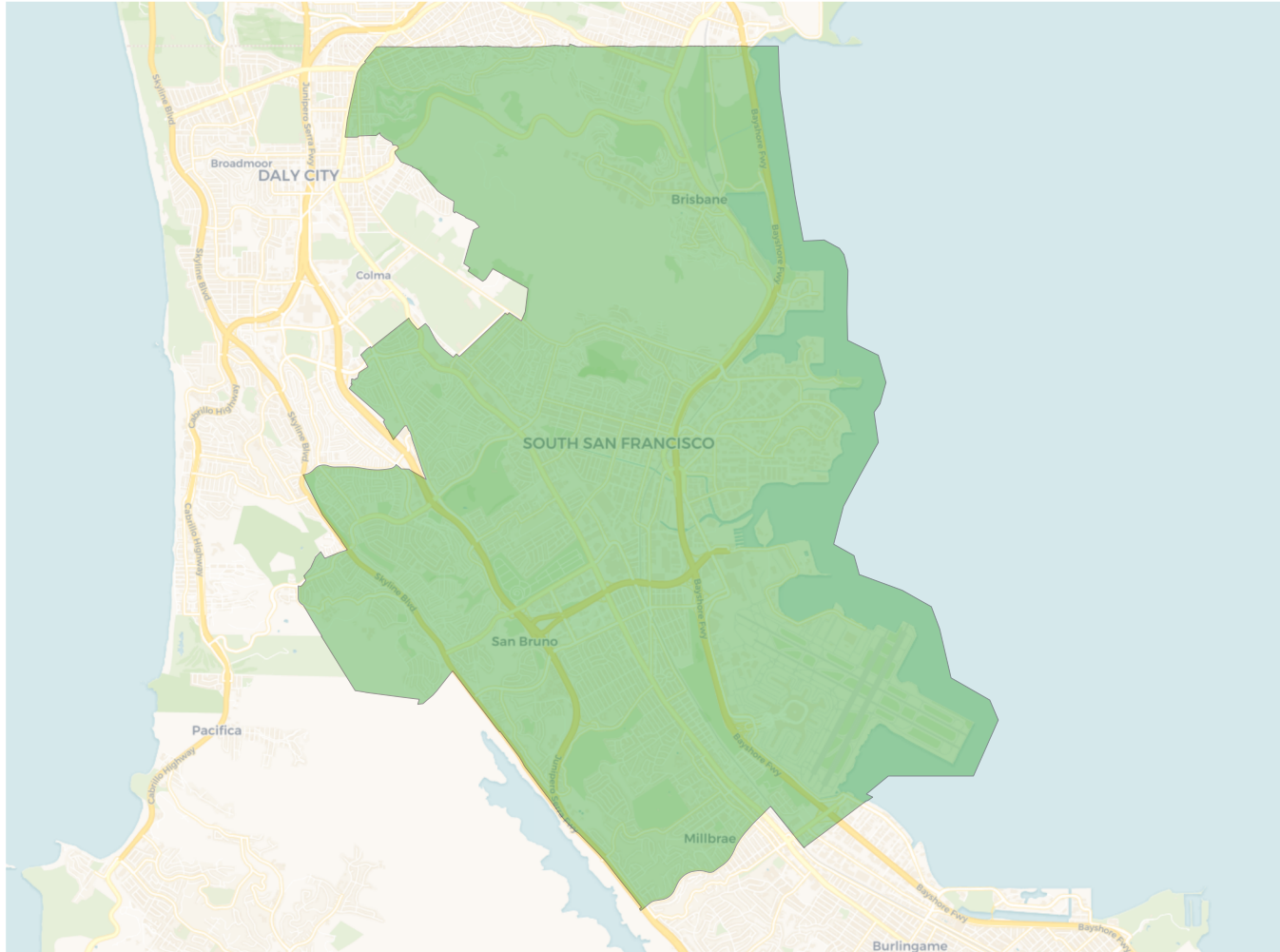


### Citizen Voting Age Population

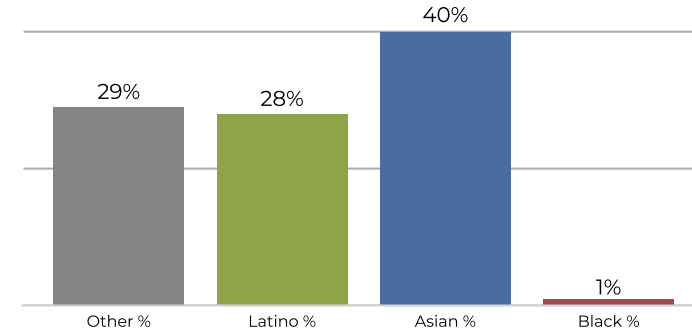


Population	Deviation	Deviation %	Other	Other %	Latino	Latino %	Asian	Asian %	Black	Black %
147,260	-5,823	-3.8%	71,670	48.7%	31,650	21.5%	41,902	28.5%	2,038	1.4%
Total CVAP	Other CVAP	Other CVAP %	Latino CVAP	Latino CVAP %	Asian CVAP	Asian CVAP %	Black CVAP	Black CVAP %		
91,612	52,836	57.7%	13,751	15.0%	23,163	25.3%	1,862	2.0%		

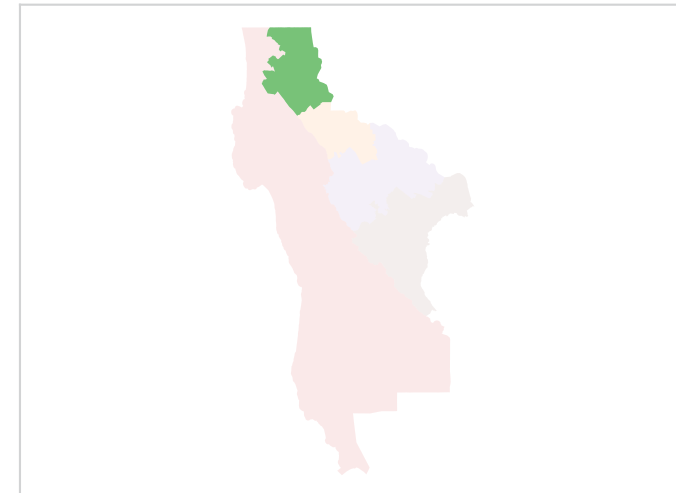
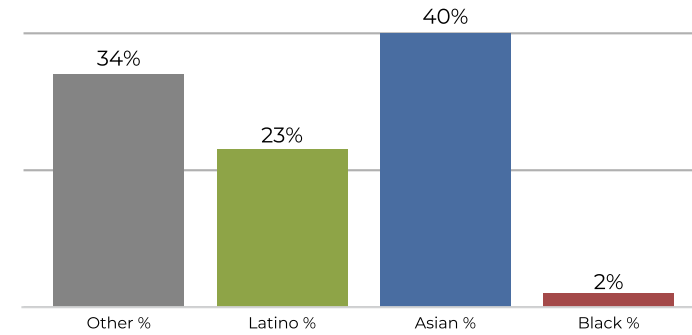
### District B



### 2020 Census

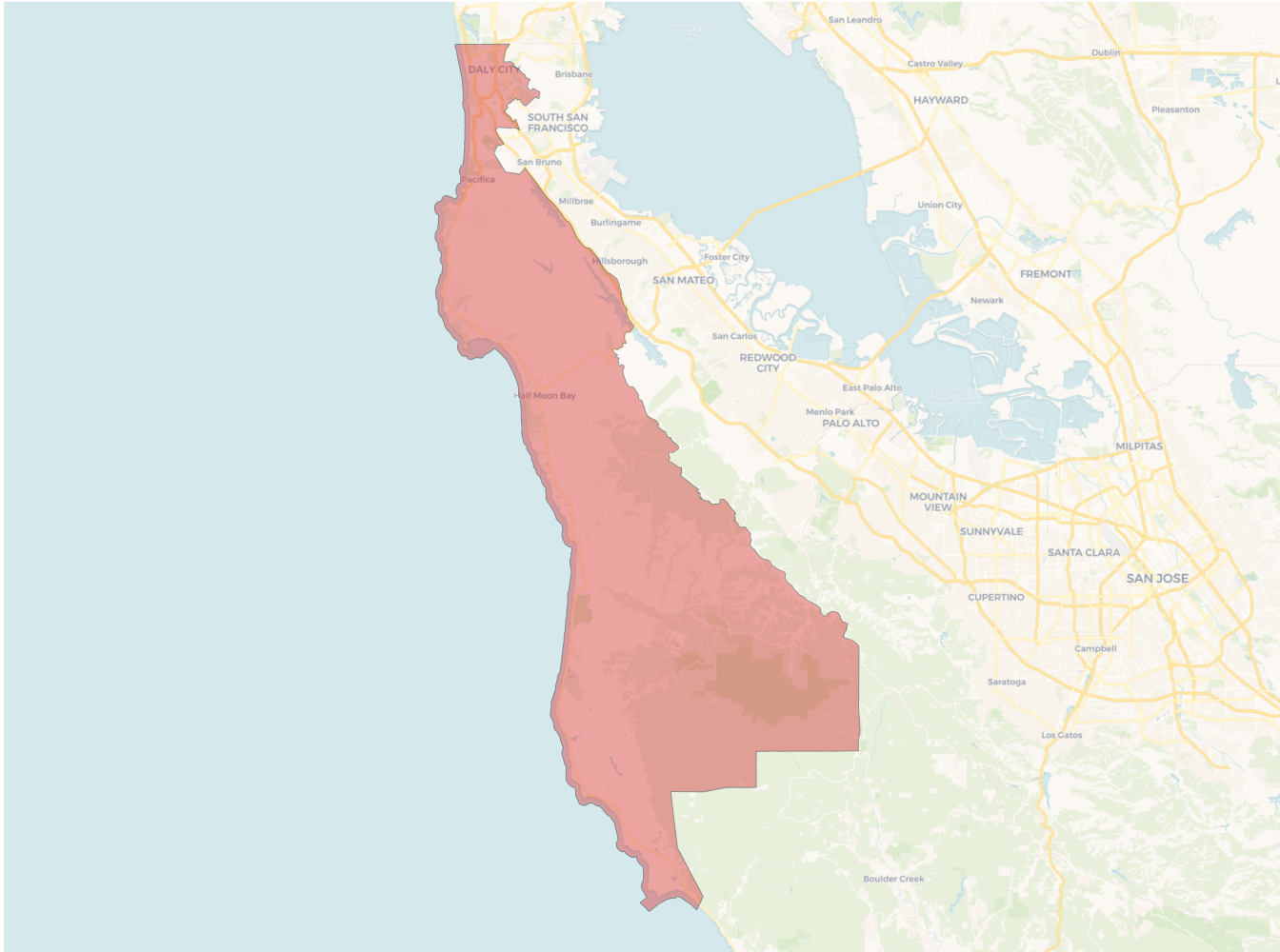


### Citizen Voting Age Population

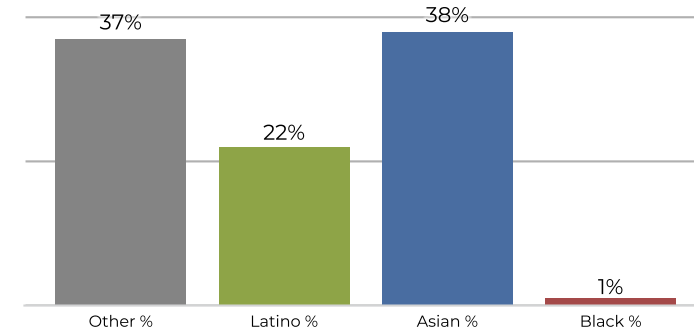


Population	Deviation	Deviation %	Other	Other %	Latino	Latino %	Asian	Asian %	Black	Black %
154,748	1,665	1.1%	44,867	29.0%	44,343	28.7%	62,779	40.6%	2,759	1.8%
Total CVAP	Other CVAP	Other CVAP %	Latino CVAP	Latino CVAP %	Asian CVAP	Asian CVAP %	Black CVAP	Black CVAP %		
108,010	36,888	34.2%	25,528	23.6%	43,461	40.2%	2,133	2.0%		

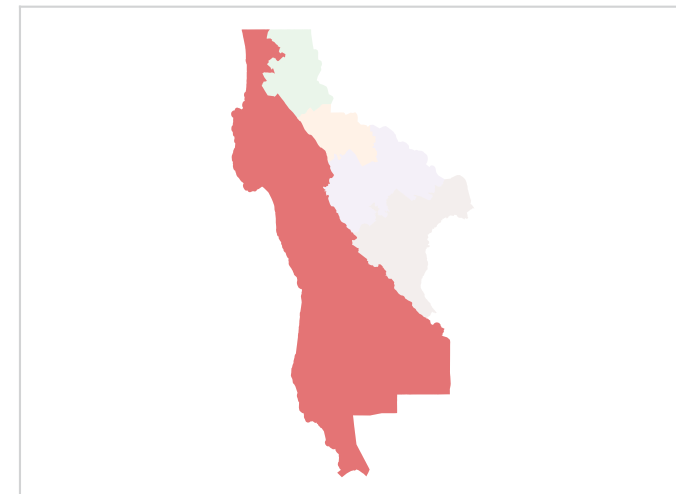
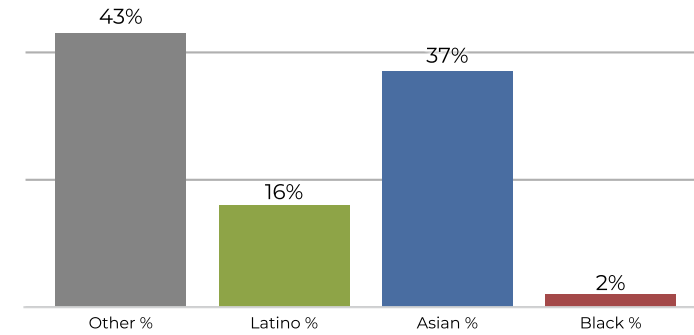
### District C



### 2020 Census

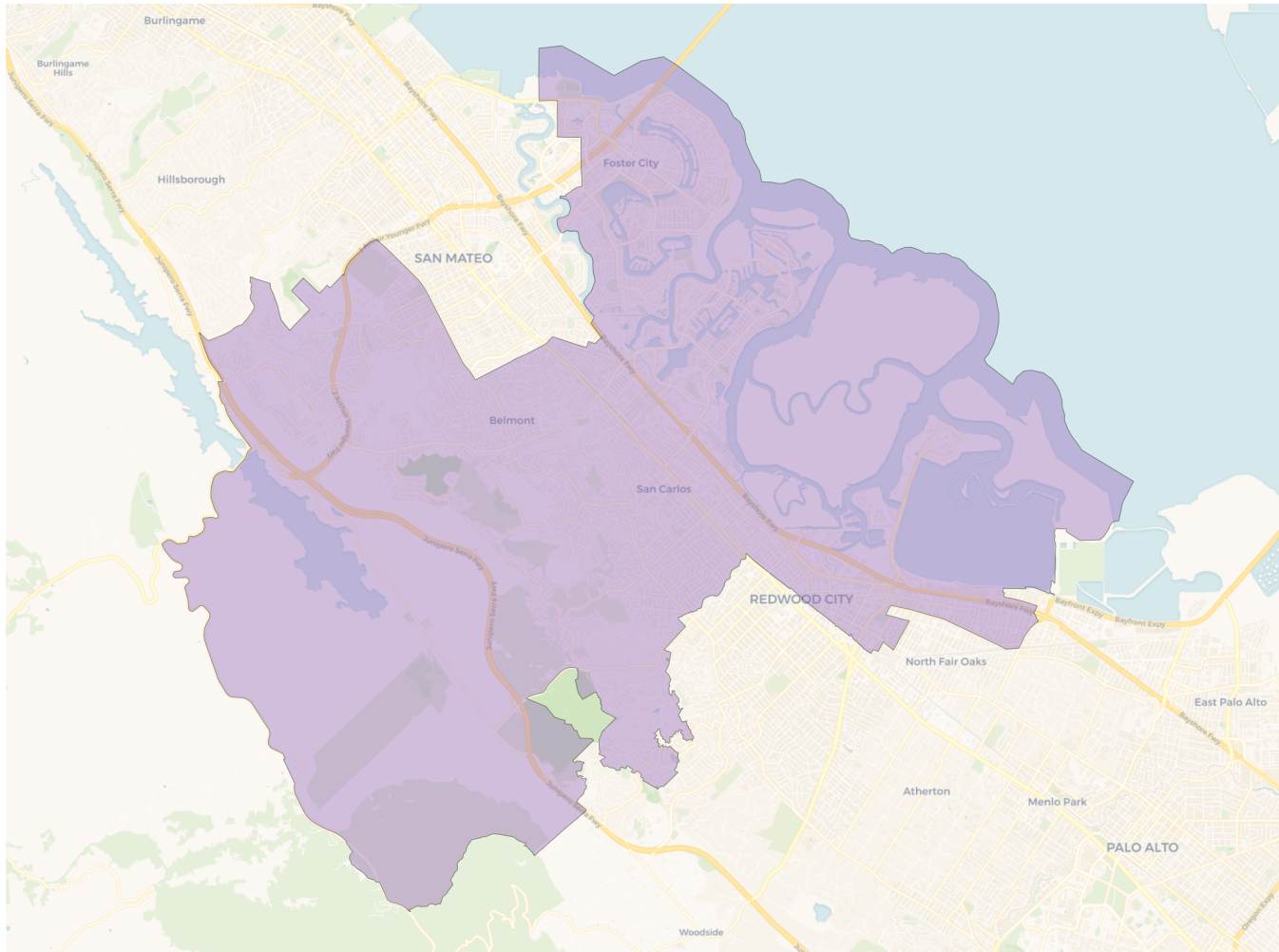


### Citizen Voting Age Population

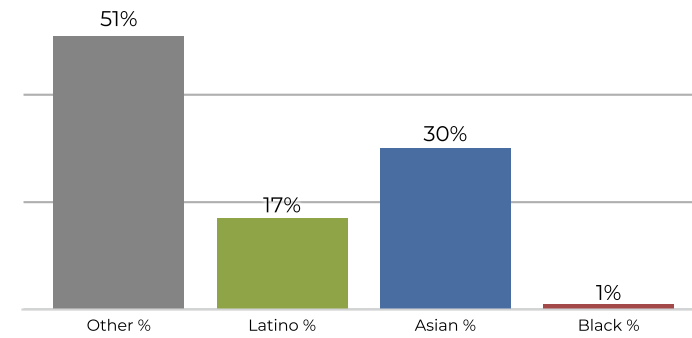


Population	Deviation	Deviation %	Other	Other %	Latino	Latino %	Asian	Asian %	Black	Black %
157,706	4,623	3.0%	58,948	37.4%	35,559	22.5%	60,380	38.3%	2,819	1.8%
Total CVAP	Other CVAP	Other CVAP %	Latino CVAP	Latino CVAP %	Asian CVAP	Asian CVAP %	Black CVAP	Black CVAP %		
114,148	49,747	43.6%	18,722	16.4%	42,336	37.1%	3,343	2.9%		

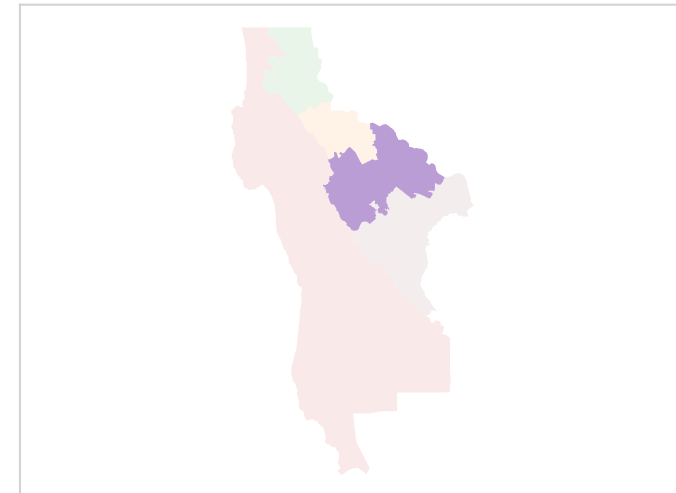
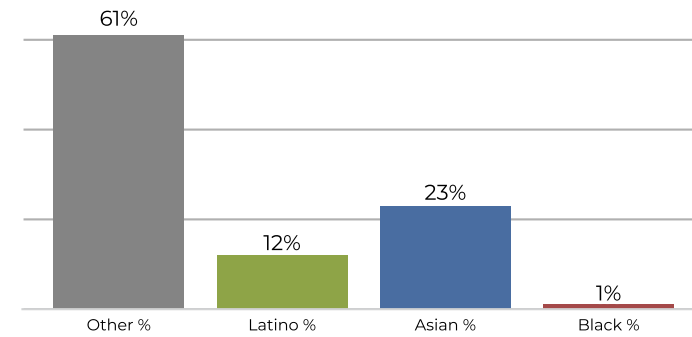
### District D



### 2020 Census



### Citizen Voting Age Population

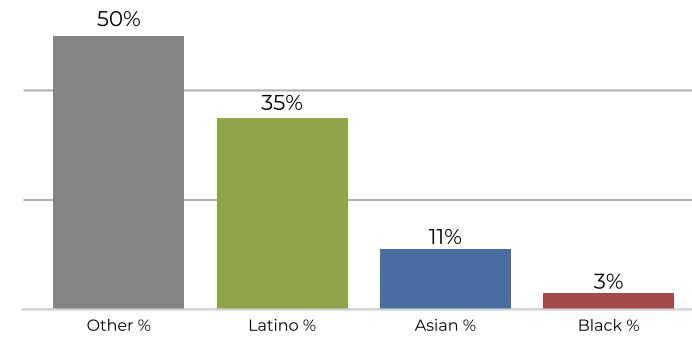


Population	Deviation	Deviation %	Other	Other %	Latino	Latino %	Asian	Asian %	Black	Black %
149,978	-3,105	-2.0%	77,032	51.4%	25,556	17.0%	45,406	30.3%	1,984	1.3%
Total CVAP	Other CVAP	Other CVAP %	Latino CVAP	Latino CVAP %	Asian CVAP	Asian CVAP %	Black CVAP	Black CVAP %		
94,108	58,291	61.9%	11,931	12.7%	22,114	23.5%	1,772	1.9%		

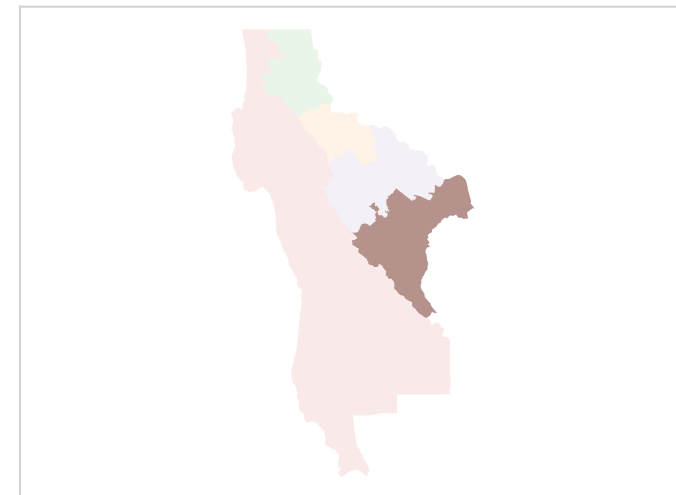
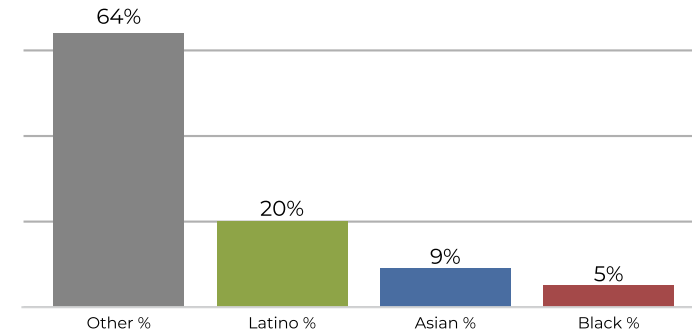
### District E



### 2020 Census



### Citizen Voting Age Population



Population	Deviation	Deviation %	Other	Other %	Latino	Latino %	Asian	Asian %	Black	Black %
155,725	2,642	1.7%	78,351	50.3%	54,670	35.1%	17,358	11.1%	5,346	3.4%
Total CVAP	Other CVAP	Other CVAP %	Latino CVAP	Latino CVAP %	Asian CVAP	Asian CVAP %	Black CVAP	Black CVAP %		
94,458	60,572	64.1%	19,746	20.9%	9,246	9.8%	4,894	5.2%		